

# MiniMag™

## Compact Intelligent MagStripe Swipe Reader

### Full Functionality & Compact Size

The MiniMag Intelligent Reader delivers exceptional performance in brilliantly designed housing. It can read up to three tracks of magnetic stripe card data regardless of swiping direction or speed which increases usability. MiniMag's compact footprint is ideal for POS, security, loyalty and other applications where space is limited.

### Easy to Use & Install

The uniquely designed flat surface allows for mounting in different orientations using threaded inserts or Velcro®. The cable can exit through the side or bottom which provides flexibility in mounting options.

### Multiple Interfaces to Meet Your Needs

MiniMag is an intelligent swipe reader with six communication interfaces: keyboard (PS/2) wedge, USB keyboard, USB HID, RS-232, RS-232 Port Powered, and USB CDC serial interfaces. JPOS and OPOS drivers are also available.

### Many Programmable Features

The MiniMag is a fully programmable reader. Reader output format can be customized with user-friendly, Windows-based MagSwipe Configuration Utility. For example, after reading and validating card data, the unit can be programmed to parse the data, insert control characters, and add prefix/suffix characters while maintaining data integrity through vertical and longitudinal error checking. The reader also includes language options to ensure that the correct data is sent to the terminal.

### Features and Benefits

- Interfaces: Keyboard, RS-232, RS-232 Port Powered, USB keyboard, USB CDC, or USB HID
- User-friendly configuration software, simplified data editing and configuration
- Discriminates card data formats between AAMVA and CA DMV
- Reads up to three tracks of information
- Reliable MagStripe reader for a minimum of one million card swipes
- Clear identification of successful card reads with a beeper and LED indicators
- Can be used free-standing or mounted to work with a variety of applications
- Threaded inserts for easy and flexible mounting



**IDTECH®**  
Value through Innovation

# MiniMag™ Specifications IDMB-33XXXX

## Electrical

### Power Requirements:

+ 5 VDC +/-10%, 50mV ripple Max.

Keyboard, 40mA Max.

USB keyboard and RS-232, 70mA Max.

USB HID and USB CDC 5.5mA typical with LED, 8mA peak

### Interfaces:

Keyboard (PS/2), RS-232, RS-232 Port Powered, USB keyboard, USB HID, USB CDC

## Environmental

### Operating Temperature:

0°C to 55°C (32°F to 131°F)

### Storage Temperature:

-30°C to 65°C (-22°F to 149°F)

### Humidity:

Maximum 95% non-condensing, dry storage

## Reliability

### Operating Life:

1,000,000 cycles minimum

### Warranty:

Two years, parts and labor

## Mechanical

### Media Thickness:

0.015 inches (0.381mm) to 0.038 inches (1.14mm)

### Media Formats:

ISO 7811, AAMVA, and other F2F formats

### Slot Width:

0.040 inches (1.37mm)

### Swipe Speed:

3 to 60 inches per second, bi-directional

### Dimensions(L)x(W)x(H):

3.54 inches (90mm) x 1.34 inches (34mm) x 1.10 inches (28mm)

### Weight:

4.6 oz.

### Indicators:

Tri-colored LED, beeper (excluding on port-powered model)

### Cable Length:

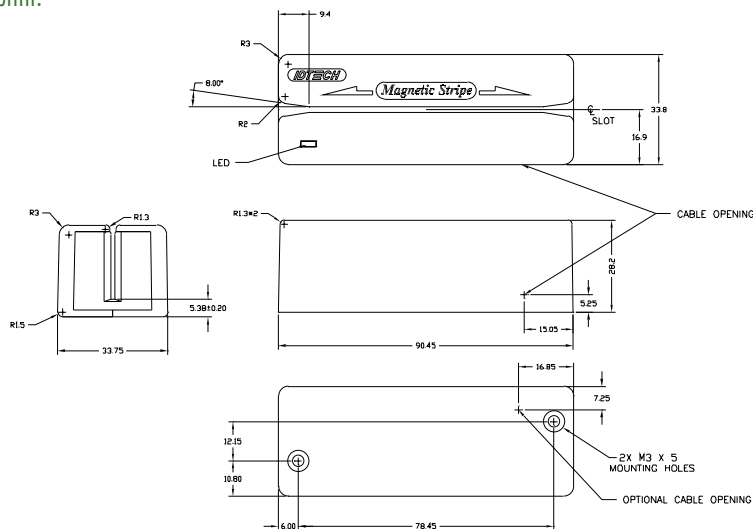
6-foot side exit cable (Bottom exit is an option)

### Cable Connector:

Keyboard - 6 pin mini-DIN, RS-232 DB9F



### Footprint:



**IDTECH®**  
Value through Innovation

### Corporate Headquarters:

10721 Walker Street, Cypress, California 90630

[www.idtechproducts.com](http://www.idtechproducts.com)

(714) 761-6368 [sales@idtechproducts.com](mailto:sales@idtechproducts.com)

### International Sales Office for Canada & South America:

+ 450 465 5261 (Canada) [robertop@idtechproducts.com](mailto:robertop@idtechproducts.com)

### European Sales Offices:

+ 49(0) 8851 6159900 (Germany)

[emea@idtechproducts.com](mailto:emea@idtechproducts.com)

**ISO 9001 Certified**

# Legacy Technology Services

**We Rent & Sell All Types Of Barcode Equipment**

Call now to talk to an expert

**866-271-9891**

[www.LegacyGlobal.com](http://www.LegacyGlobal.com)

Some brands we carry



MOTOROLA

**Intermec**

**DATALOGIC**™

**Honeywell**

**EQUINOX**  
PAYMENTS



## About us

- Legacy Technology Services is a leading nationwide provider of mobile computing, barcode, printers and point of sale equipment and services.
- For over a decade, thousands of clients across North America have trusted us to provide equipment from leading manufacturers backed by the services to support them.

## Latest Hardware from top manufacturers

- Legacy handles virtually every major manufacturer of mobile computing, barcoding and point of sale equipment.

## Expert Repair and Maintenance services

- Legacy is one of the best repair facilities in North America

## Discontinued product sourcing

- They don't make it anymore? Our inventory also includes manufacturer close-outs and discontinued equipment to support our clients legacy infrastructure.

## Trade-in and Disposal services

- That old equipment laying around your facility may still have some value. Legacy routinely purchases equipment from our clients around the globe.
  - Data destruction
  - Hardware disposal
  - Auditing services

## Dedicated client account team

- Dedicated, highly trained account managers are here to answer all your questions and provide top notch service.

## Equipment rental services

- Sometimes renting is a better solution, Legacy's huge rental inventory provides the equipment you need for temporary needs and projects.



[Legacy, Inc.](http://Legacy, Inc.)

160 West Road,  
Ellington, CT 06029

Toll Free: 866-271-9891

Fax: 888-522-4684